

PART OF THE NW.1/4, OF SECTION 25, T.5N., R.1W., S.L.B. & M.

753

DAUPHINE-SAVOY-PIEDMONT SUB

IN WEBER COUNTY

TAXING UNIT: 54

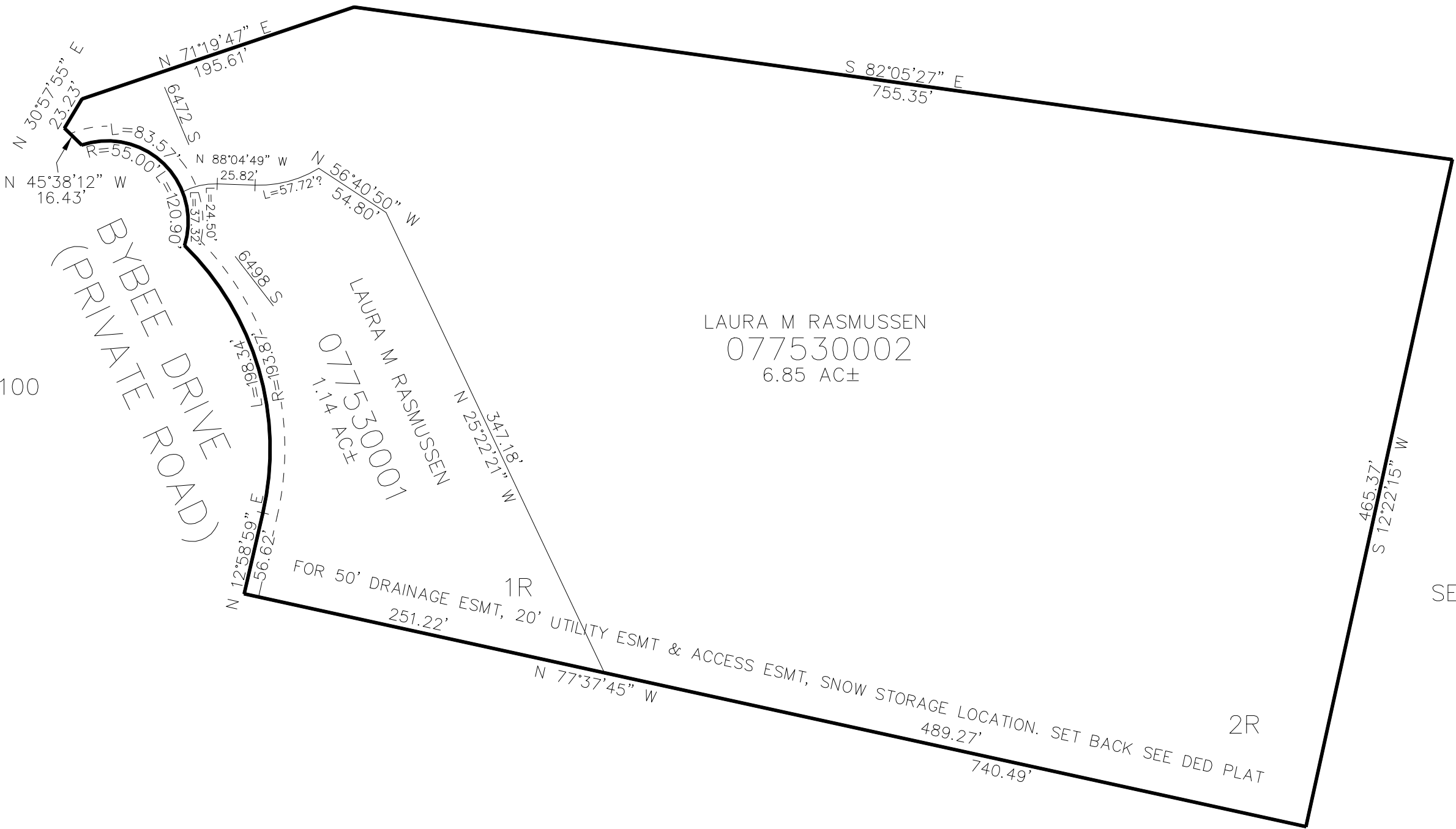
SCALE 1" = 80'

SEE PAGE 100

SEE PAGE 100

SEE PAGE 100

SEE PAGE 100



10' UTILITY & DRAINAGE EASEMENTS EACH
SIDE OF PROPERTY LINES AS INDICATED
BY DASHED LINES EXCEPT AS OTHERWISE
SHOWN.

FOR COMPLETE ENG DATA SEE
ORIGINAL DEDICATION PLAT IN
BOOK 75, PAGE 70 OF RECORDS.